

Bayfield Street Reconstruction Project - Phase 2



This project will combine efforts with the Wisconsin Department of Transportation and the City of Washburn to reconstruct Bayfield Street, from 2nd Ave. W to Superior Ave. Anticipated construction in 2026 or 2027

Scope of Work

Wisconsin DOT

- Reconstruct roadbed and place new pavement
- New Curb & Gutter where needed

City of Washburn - Utility Upgrades

- Water
- Sanitary Sewer
- Storm Sewer
- Other items to be determined
 - Sidewalks
 - Curb and Gutter as requested
 - Others Amenities

Suggested Improvements

Lane Configuration Options

(6th Ave E)

- Install a Left Turn Lane
- Leave current conditions in place

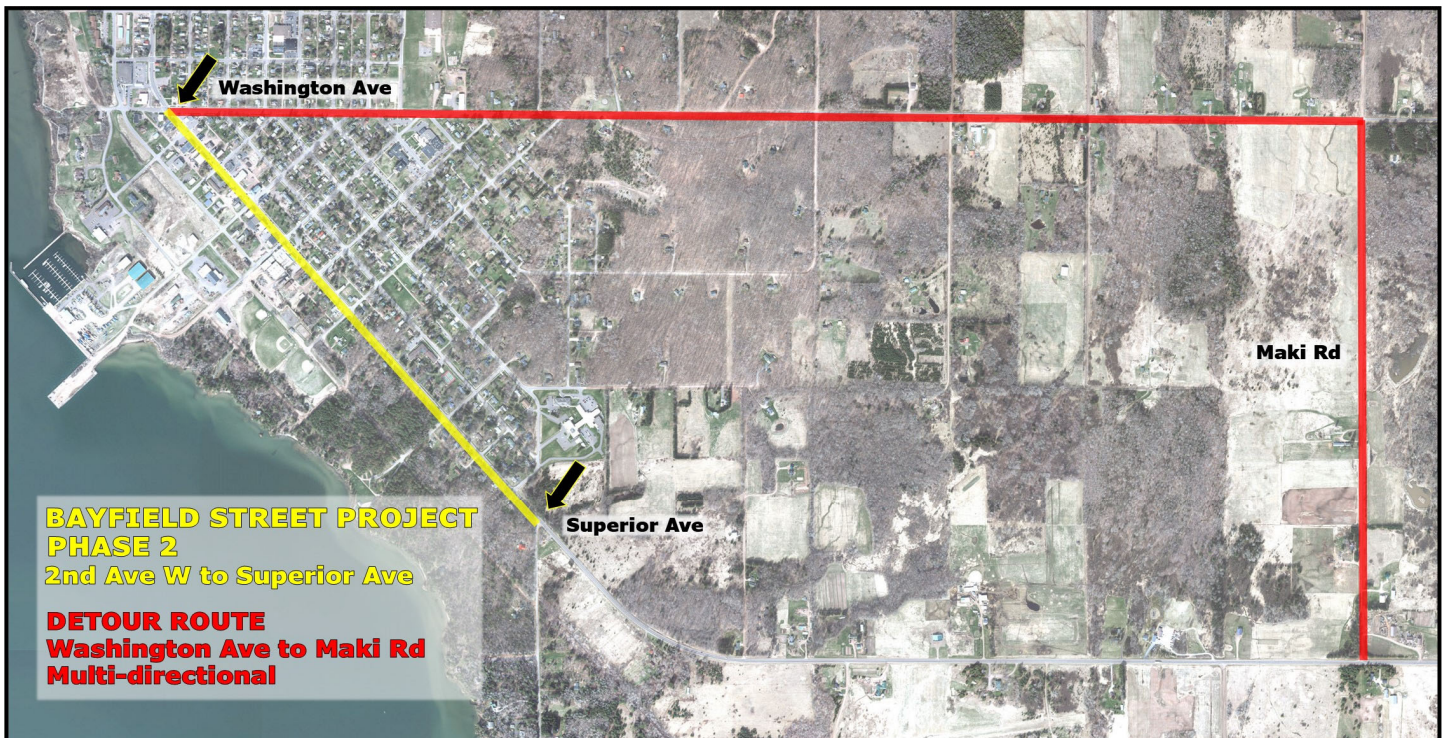
Pedestrian Crossing Options

(Central Ave 3rd Ave E and 6th Ave E)

- Install Curb Bump-Outs
- Leave current conditions in place

Pedestrian Options

- Sidewalk to Superior Ave
- Intersection Art
- Public Space
- Leave current conditions in place



Bayfield Street Reconstruction Project - Phase 2

Left Turn Lane Options

200' east of 6th Ave E

- Provide a safer driving corridor at Memorial Park entrance
- May choose the no change option



Pedestrian Crossing Options

Central Ave, 3rd Ave E and 6th Ave E

Curb Bump-Outs

- Provide safer pedestrian crossing at Central Ave, to the Athletic Fields and to Memorial Park
- Increase sidewalk winter maintenance



Other Options

Central Avenue

- Intersection or Crosswalk Art
- Close Central Ave north to alley for Public Space



Questions/Comments,
Please call: (715) 373-6160, ext. 1 or 4
Or email: asstadmin@cityofwashburn.org