

FIGURE A: PARCEL SURVEY

2015
Parcel Map Addendum

PATRICIA A. OLSON
BAYFIELD COUNTY, WI
REGISTER OF DEEDS
2008R-523301
10/14/2008 01:10PM

IF EXEMPT N:
RECORDING FEE: 11.00
PAGES: 2

Vol. 9 CSM Pg 360-361

BAYFIELD COUNTY CERTIFIED SURVEY MAP NO. 1636
A PARCEL OF LAND LOCATED IN GOVERNMENT LOT 2 OF SECTION 5, T. 48 N.,
R. 4 W., IN THE CITY OF WASHBURN, BAYFIELD COUNTY, WISCONSIN

1775

BEARINGS ARE BASED ON THE NORTH
LINE OF THE NE 1/4 OF SECTION 5
ASSUMED AS S 89°03'57" W

ALL P.L.N. ARE PROVIDED BY
042912480405

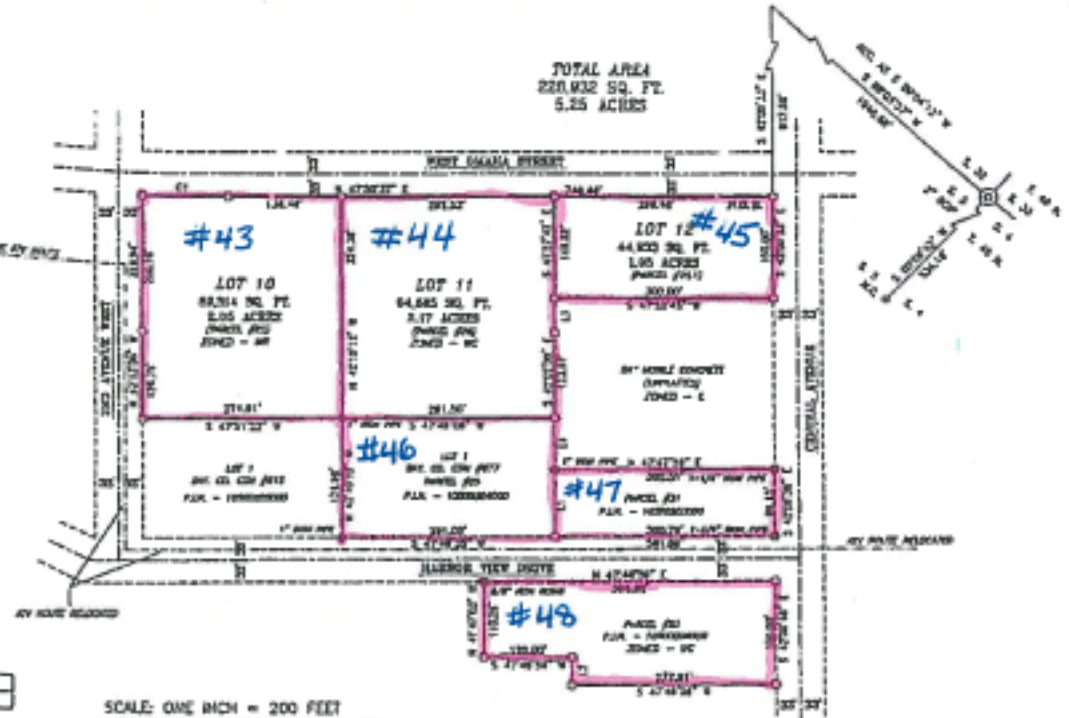


LINE TABLE

LINE	BEARING	DISTANCE
L1	N 41°21'41" W	28.97
L2	N 41°47'03" W	38.28
L3	S 41°57'42" E	50.48
L4	N 42°35'28" W	75.03

CURVE TABLE

CURVE	ARC	DENOM.	POINTS	CHORD DIST.	CHORD BEARING
C1	118.75	3727.37	2765.00	118.75	N 42°04'34" E



SCALE: ONE INCH = 200 FEET



PPE DIMENSIONS ARE OUTSIDE DIMENTS

LEGEND

- MONUMENT AS NOTED, FOUND IN PLACE
- 1-1/2" x 18" IRON PIPE, BEARING 1.67 LBS./FT., SET THIS SURVEY

CLIENT: THE CITY OF WASHBURN

JOB NO: 201_003
SCALE: 1 INCH = 200 FEET
DATE: 09, 2008
DRAWN BY: G.B.

FILE: M:\2014\WASHBURN\201409\20140901\20140901.DWG
ME: JET PC 08
SHEET 1 OF 2 SHEETS

NILSON
SURVEYING
INCORPORATED
SURVEYING REGISTERED PROFESSIONAL ENGINEER

101 W. MAIN STREET
SUITE 207
OSHTON KOSCHIK BLDG
ST. JOSEPH, MO 64501
TEL: (417) 467-7100
FAX: (417) 467-7400

MAP NO. CSM 1775 (9)

360

FIGURE B: AIRPORT LOCATIONS

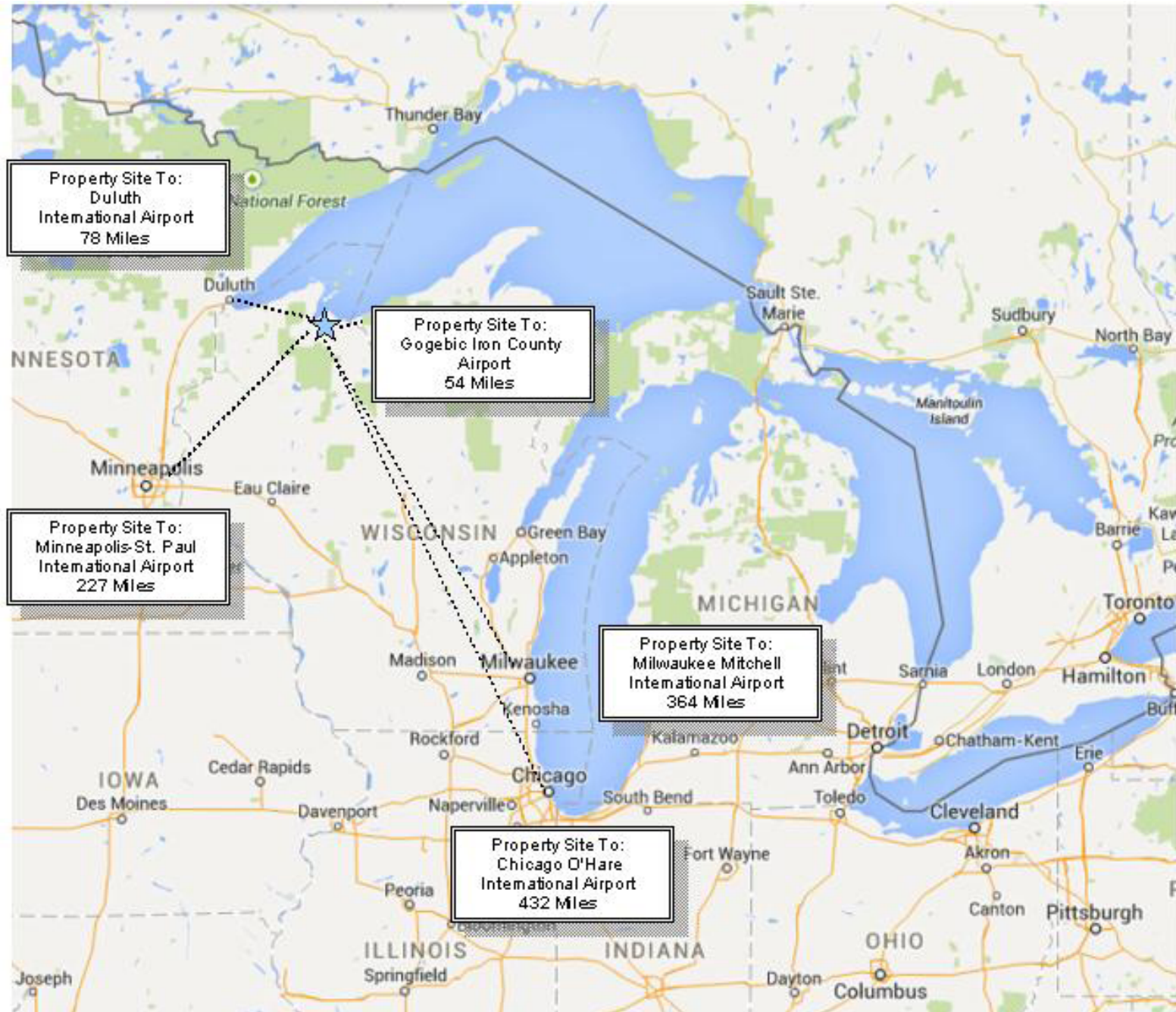


FIGURE C: DESTINATION LOCATION RADIUS

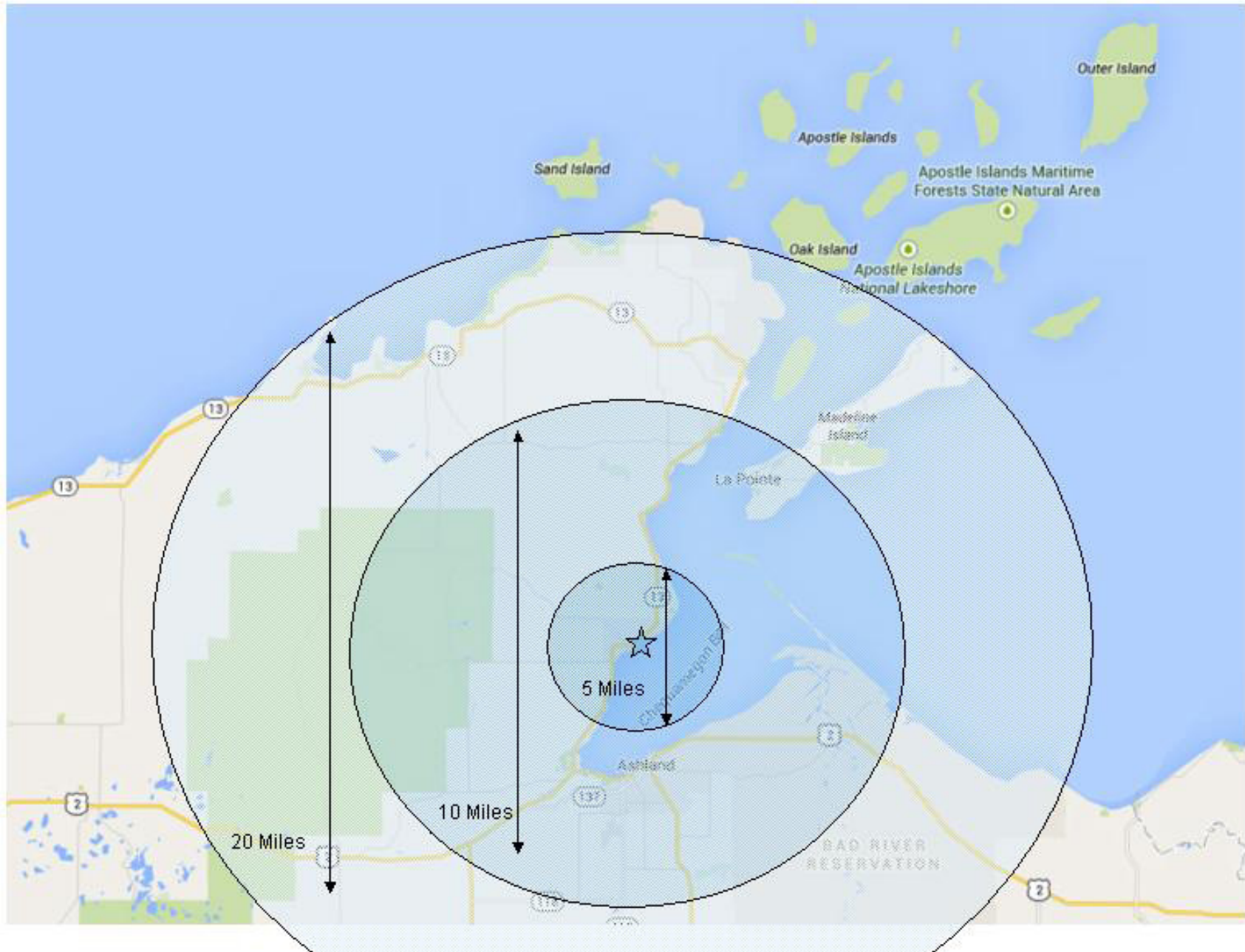


FIGURE D: CITY OF WASHBURN DESTINATION LOCATIONS



FIGURE E: 10 MILE RADIUS TO DESTINATION LOCATIONS



FIGURE F: 20 MILE RADIUS TO DESTINATION LOCATIONS

