

# BAYFIELD COUNTY

## Snowmobile Map 2021-22

**FOR EMERGENCY MEDICAL ASSISTANCE, DIAL 911.**

Please provide your location look for the nearest addressing number sign and trail intersections to the nearest roadway.

**55050**

COUNTY RD.

**LEGEND**

**Snowmobile Trail Symbols**

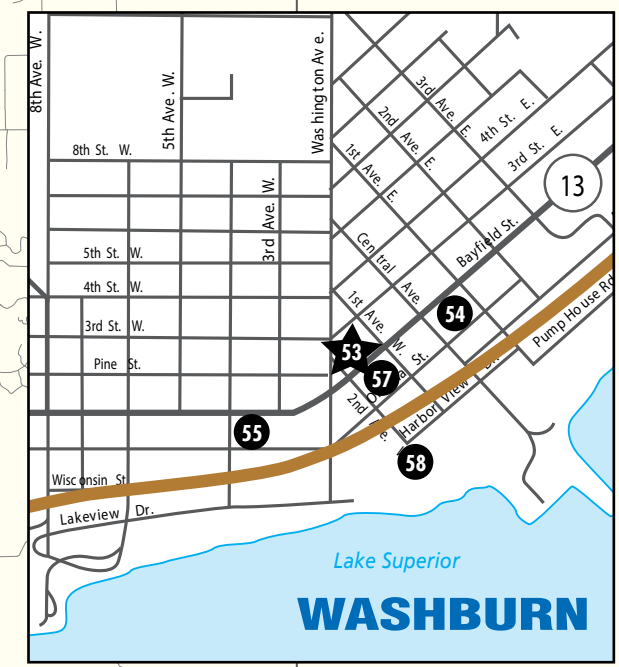
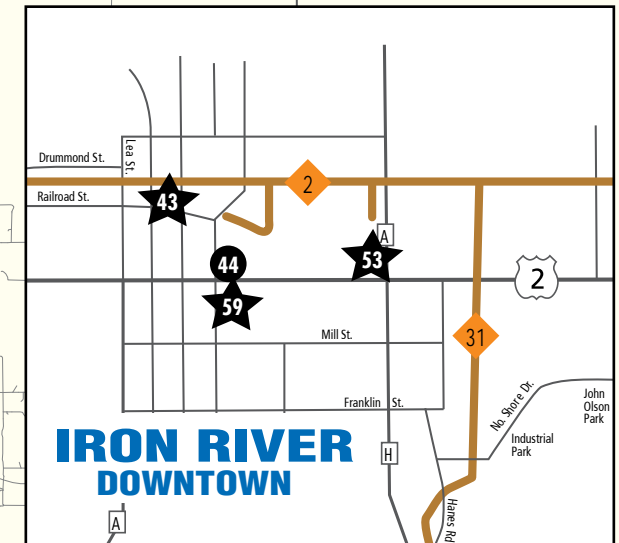
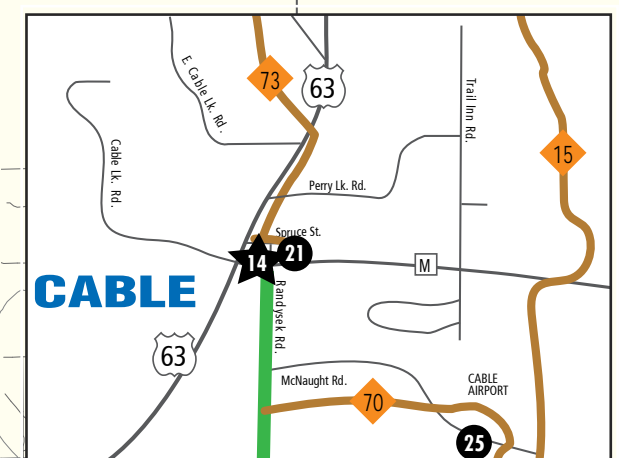
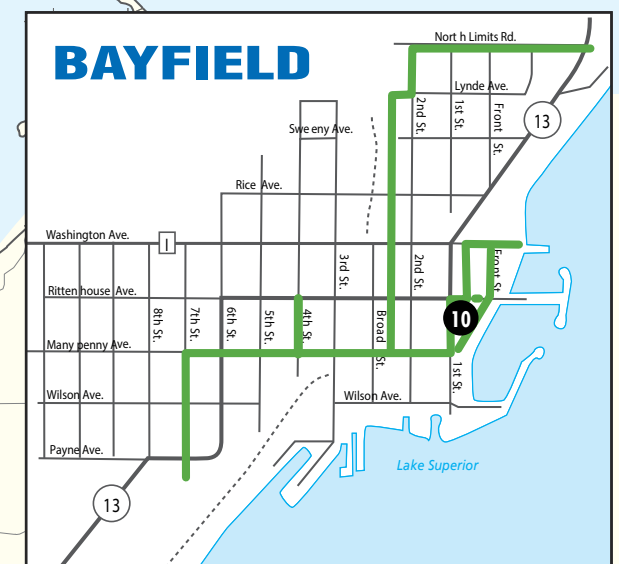
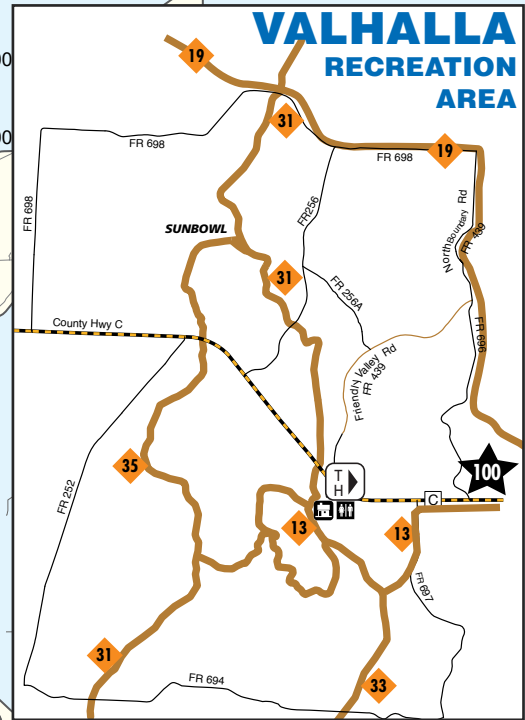
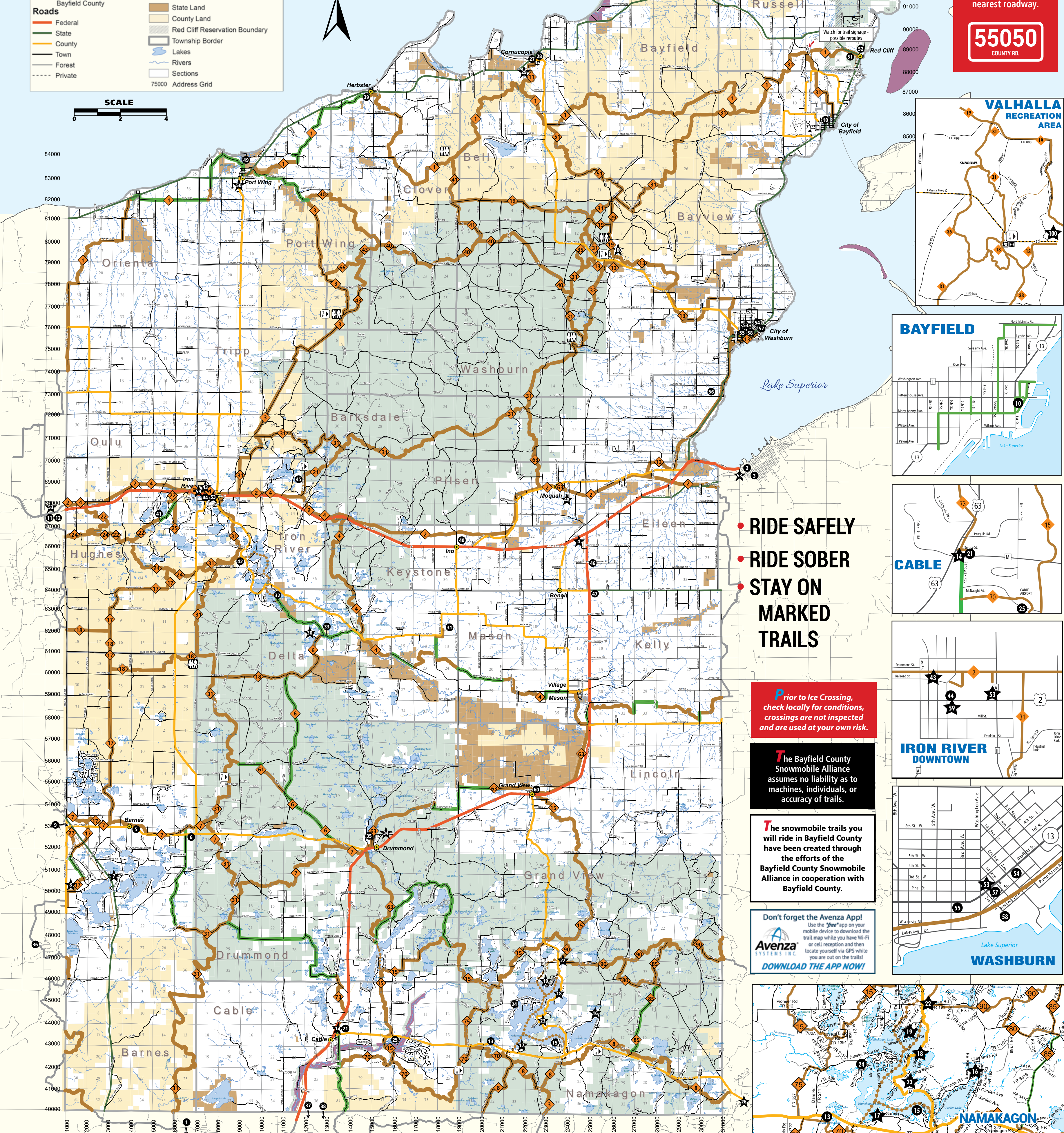
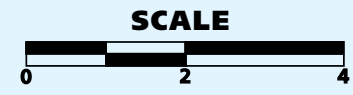
- Groomed Snowmobile Trail
- Plowed Road - Not Groomed
- Lake Trail
- Trail Segment not in Bayfield County

**Roads**

- Federal
- State
- County
- Town
- Forest
- Private

**Other Symbols**

- Unincorporated Villages
- Federal Land
- Apostle Islands National Lakeshore & Wild and Scenic River
- State Land
- County Land
- Red Cliff Reservation Boundary
- Township Border
- Lakes
- Rivers
- Sections
- 75000 Address Grid



- RIDE SAFELY
- RIDE SOBER
- STAY ON MARKED TRAILS

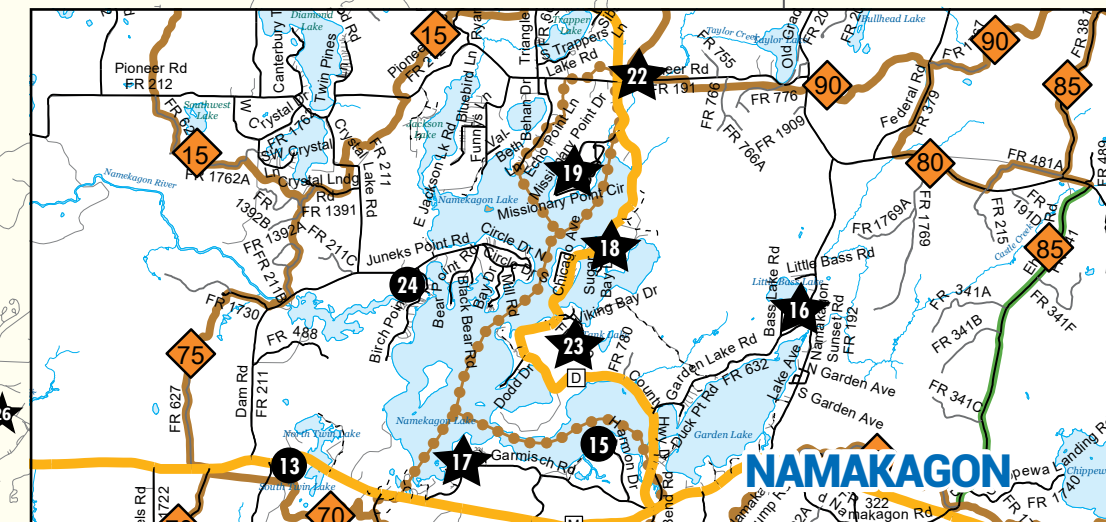
*Prior to Ice Crossing, check locally for conditions, crossings are not inspected and are used at your own risk.*

The Bayfield County Snowmobile Alliance assumes no liability as to machines, individuals, or accuracy of trails.

The snowmobile trails you will ride in Bayfield County have been created through the efforts of the Bayfield County Snowmobile Alliance in cooperation with Bayfield County.

Don't forget the Avenza App! Use the "Free" app on your mobile device to download the trail map while you have Wi-Fi or cell reception and then locate yourself via GPS while you are out on the trails!

**DOWNLOAD THE APP NOW!**



**Stop by these businesses and express your thanks for their support!**

- ★ = Gas Available
- 1 2 SLEDS AND A TRAILER, Grey Eagle, MN
- 2 ASHLAND SUPER 8, Ashland
- 3 MEMORIAL MEDICAL CENTER, Ashland
- 4 PAGAC'S BAR, Ashland
- 5 BARNES TRADING POST, Barnes
- 6 DOORNY'S INN, Barnes
- ★ JIM'S BAIT & CONVENIENCE STORE, Barnes
- ★ P.J.'S CABIN STORE, Barnes
- 9 R-C DECOY INN, Barnes
- 10 THE BAYFIELD INN, Bayfield
- 11 BRULE RIVER MOTEL & CAMPGROUND, Brule
- 12 KRO BAR AND GRILL, Brule
- 13 AMMO'S EVERGREEN TAVERN, Cable
- 14 CABLE TRIPLE G, Cable
- 15 GARMISCH INN, Cable
- ★ HANK'S LANDING, Cable
- ★ LAKEWOODS RESORT & SPORTS BAR, Cable
- ★ THE LOON SALOON, LLC, Cable
- ★ MOGASHEEN RESORT, Cable
- 20 NAMAKAGON TRAIL GROOMERS, Cable
- ★ NORTH COUNTRY VACATION RENTALS, Cable
- ★ PIONEER BAR, Cable
- ★ PLA-MOR BAR & RESTAURANT, Cable
- ★ STAUEMEYER'S FOUR SEASONS RESORT, Cable
- ★ TELEMAR CONDOMINIUMS, Cable
- ★ CLAM LAKE JUNCTION, Clam Lake
- ★ FAT RADISH, Cornucopia
- ★ SISKIWIW RIVER CABINS, Cornucopia
- ★ STAR NORTH, Cornucopia
- ★ FLYING EAGLE RESORT, Delta
- ★ FROSTY'S OUTPOST, Delta
- ★ PINE POINT LODGE, Delta
- ★ SCENIC DRIVE RESORT, Delta
- ★ BEAR COUNTRY, Drummond
- ★ DRUMMOND LAKE CAMPGROUND, Drummond
- ★ M&M'S Y-GO-BY, Gordon
- ★ EL ZARCO RESTAURANT & CANTINA, Grand View
- ★ HAYWARD POWER SPORTS, Hayward
- ★ NELSON LAKE LANDING RESORT & MOTEL, Hayward
- ★ WOODY'S FOOD & SPIRITS, Herbster
- ★ IRON RIVER AUTO PARTS, Iron River
- ★ LIQUOR IN THE WOODS, Iron River
- ★ O'BRIEN'S C-STORE, Iron River
- ★ TRI LAKE TIMBERS, Iron River
- ★ LULICH IMPLEMENT, INC., Mason
- ★ SELL'S PINE CREEK PIT STOP, Moquah
- ★ HOLIDAY PINES RESORT, Port Wing
- ★ JOHNSON'S STORE, Port Wing
- ★ THE COPPER CROW DISTILLERY, Red Cliff
- ★ LEGENDARY WATERS RESORT & CASINO, Red Cliff
- ★ CENEX GAS & CONVENIENCE STORES, Ashland, Iron River, Brule & Washburn
- ★ NAPA AUTO PARTS, Washburn
- ★ PATSY'S BAR & GRILL, Washburn
- ★ SPARKY'S BAR & GRILL, Washburn
- ★ WASHBURN HARDWARE & SPORT, Washburn
- ★ THE WASHBURN INN, Washburn
- ★ VALHALLA VIEW PUB 'N' GRUB, Washburn



Rights to all information contained on the Bayfield County map are reserved by Bayfield County. No information may be reproduced in any form without the written consent of Bayfield County. Cartography by: Bayfield County Land Records Department. © 2020. This map is produced and distributed by the Bayfield County Tourism Department in cooperation with the Bayfield County Forestry and Parks Department and the Bayfield County Snowmobile Alliance.