

# Bayfield County **APPROVED** ATV/UTV Trail System 2022-23

### LEGEND

**Bayfield County ATV / UTV Symbols**  
Trails & Routes open to ALL ATVs & UTVs 65 INCHES OR LESS (solid lines)

**US Forest Service ATV / UTV Symbols**  
NEW - Trails open to ATVs & UTVs 65 INCHES OR LESS at their widest point (dotted lines)

**Other Symbols**

- Unincorporated Villages
- US Forest Service & Other Federal Land
- County Land
- Red Cliff Reservation
- Township Border
- Lakes
- Rivers
- Sections
- 45000 Address Grid

**Roads**

- Federal
- State
- Town
- County
- Private

## IMPORTANT! Off road and off trail use is prohibited across the Chequamegon-Nicolet National Forest and the Bayfield County Forest.

Some of our trails do not connect as "through" trails. When riding these trails, please remember you must back track on the marked trails! Please do not make your own trail or just try to sneak through. This makes it harder to get easements and trying to finish the trail system becomes harder as the owners of these lands are angered.

### MAP KEY

- Trailhead Parking Area
- Restrooms
- Recreation Site, Forest Service
- Sponsors
- Sponsors with Gas Available
- Trail End

For trail conditions, including temporary and Spring closures, visit [www.bayfieldcounty.wi.gov/atvtrails](http://www.bayfieldcounty.wi.gov/atvtrails)

**FOR EMERGENCY MEDICAL ASSISTANCE, DIAL 911.**  
Please provide your location -- look for the nearest fire number sign and trail intersections to the nearest roadway.

**55050**  
COUNTY RD.

**NOTE:** The numbers around the circumference of Bayfield County reference the Bayfield County Rural Address System. The address number is based on a grid of 1000 numbers per mile. Predominantly east-west roads are numbered using grid numbers 1000 to 38,000; predominantly north-south roads use grid numbers 40,000 to 96,000. When looking for an address, or reporting an emergency, state the address number, followed by the unique road name (for example, 32020 Maki Road).

### ATTENTION

- If routes are signed, even if it's not marked on the map, you may travel on them.
- If all township roads are open, it will be posted as you enter the township (also marked with an "A" on the inset maps).
- ATV/UTV trails will be closed for spring breakup, check [www.travelbayfieldcounty.com](http://www.travelbayfieldcounty.com) for updates.
- PLEASE STAY ON AUTHORIZED ATV/UTV TRAILS AND ROUTES.
- All ATVs and UTVs must have a functioning muffler and spark arrestor. It's the Law.

### PLEASE NOTE:

This map is to highlight ATV/UTV Trails and Routes that connect to the trail system. There are many additional open Routes that will have signage indicating that they are legal ATV Routes; however, they don't connect to the trail system.

### HERBSTER

\*All township roads open to ATV/UTV

### CORNUCOPIA

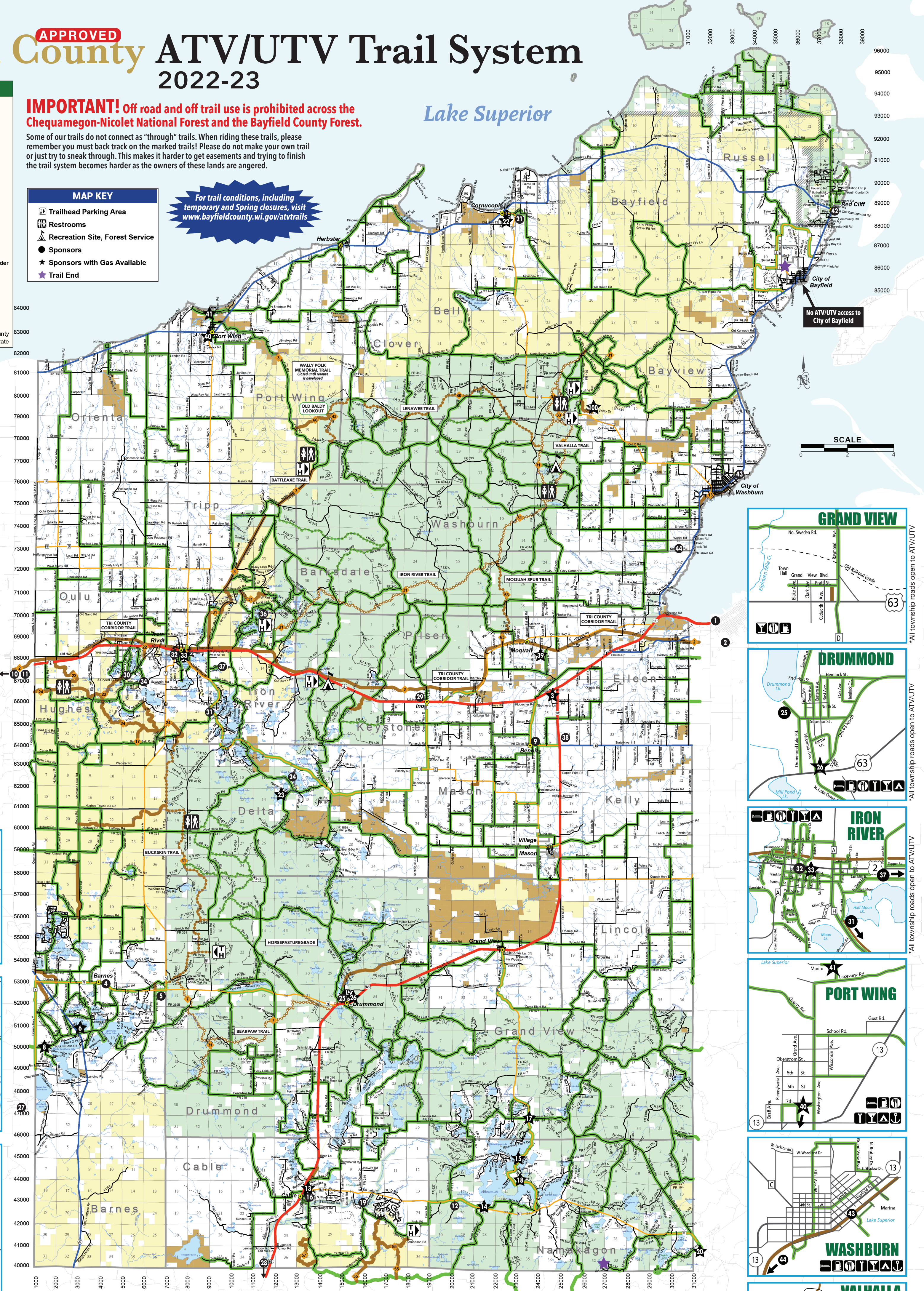
\*All township roads open to ATV/UTV

### CABLE

\*All township roads open to ATV/UTV

### BARNES

\*All township roads open to ATV/UTV



The Bayfield County ATV Clubs, Bayfield County and the Bayfield County Tourism Department assume no liability as to trails (accuracy included), machines or individuals. Stop by these businesses and express your thanks for their support! ★ Indicates Gas Available • Indicates Sponsor location not shown

- |  |   |   |
|--|---|---|
| 1 ASHLAND SUPER 8 BY WYNDHAM, Ashland    | 19 TELEMAR CONDOMINIUMS, Cable            | 36 TRI LAKE TIMBERS, Iron River                       |
| 2 MEMORIAL MEDICAL CENTER, Ashland       | 20 CLAM LAKE JUNCTION, Clam Lake          | 37 WILDWOOD CAMPGROUND, Iron River                    |
| 3 PAGAC'S BAR, Ashland                   | 21 LITTLE NIKKI'S, Cornucopia             | 38 LULICH IMPLEMENT, Mason                            |
| 4 BARNES TRADING POST, Barnes            | 22 STAR NORTH, Cornucopia                 | 39 SELL'S PINE CREEK PIT STOP, Moquah                 |
| 5 DOORN'S INN Barnes                     | 23 FLYING EAGLE RESORT, Delta             | 40 JOHNSON'S STORE, Port Wing                         |
| 6 JIM'S BAIT & C-STORE Barnes            | 24 SCENIC DRIVE RESORT, Delta             | 41 PORT WING MARINA & HOLIDAY PINES RESORT, Port Wing |
| 7 LAKE COUNTRY ATV CLUB Barnes           | 25 DRUMMOND LAKE CAMPGROUND, Drummond     | 42 LEGENDARY WATERS RESORT & CASINO, Red Cliff        |
| 8 P.J.'S CABIN STORE Barnes              | 26 HUNTER'S GENERAL STORE, Drummond       | 43 NAPA AUTO PARTS, Washburn                          |
| 9 BENOIT CHEESE HAUS, Benoit             | 27 M&M'S-Y-GO-BY, Gordon                  | 44 SPARKY'S BAR & GRILL, Washburn                     |
| 10 BRULE RIVER MOTEL & CAMPGROUND, Brule | 28 HAYWARD POWER SPORTS, Hayward          | ★ 100 VALHALLA VIEW PUB & GRUB, Washburn              |
| 11 KRO-BAR & KRO'S NEST LODGE, Brule     | 29 INO BAR & GRILL, Ino                   |   |
| 12 AMMO'S EVERGREEN TAVERN, Cable        | 30 BIRCH GROVE CAMPGROUND, Iron River     |   |
| 13 CABLE TRIPLE G GAS & GOODS, Cable     | 31 BUSKEY BAY RESORT, Iron River          |   |
| 14 LAKEWOODS RESORT, Cable               | 32 LIQUOR IN THE WOODS SALOON, Iron River |   |
| 15 LOON SALOON, Cable                    | 33 O'BRIEN'S C-STORE, Iron River          |   |
| 16 NORTH COUNTRY VACATION RENTALS, Cable | 34 TOP O' THE MORN, Iron River            |   |
| 17 PIONEER BAR, Cable                    | 35 TRAILS NORTH ATV CLUB, Iron River      |   |

**40 MPH** BAYFIELD COUNTY ENFORCES A 40 MPH SPEED LIMIT UNLESS POSTED OTHERWISE

**Avenza SYSTEMS INC.**  
Don't forget the Avenza App!  
Use the \*free\* app on your mobile device to download this trail map while you have Wi-Fi or cell reception and then locate yourself via GPS while you are out on the trails!  
**DOWNLOAD THE APP NOW!**

### VALHALLA RECREATION AREA

\*All township roads open to ATV/UTV

Rights to all information contained on the Bayfield County Map are reserved by Bayfield County. No information may be reproduced in any form without the written consent of Bayfield County. Geographic Information Systems (GIS) data supplied by Bayfield County Land Records Department. ©2021

Special thanks to everyone who provided information for the map.