

**CITY OF WASHBURN**  
**119 Washington Avenue**  
**P.O. Box 638**  
**Washburn, WI 54891**



**715-373-6160**  
**715-373-6161**  
**FAX 715-373-6148**

## **NOTICE OF PARKS COMMITTEE MEETING**

**DATE:** Tuesday, August 15, 2023  
**TIME:** 5:30 p.m.  
**LOCATION:** Thompson's West End Park – Pavilion

*Limited seating will be available.*

### **AGENDA:**

- Call to Order/Roll Call
- Approval of the July 18, 2023 Meeting Minutes
- Updates from Public Works Department & City Administration
- Update on Implementation and Updating of the Lakeshore Parkway & Walking Trail Land Management Plan & WI Coastal Management Grant
- Discussion & Recommendation of West End Park Campground Expansion Plan
- Discussion for Memorial Park Campground Improvements Plan
- Tour West End Park Campground
- Adjournment

It is possible that members of, and possibly a quorum of, other governmental bodies including the Common Council of the City of Washburn are in attendance at the above meeting. No action will be taken by any governmental body other than the Parks Committee.

**July 18, 2023**

**City of Washburn Parks Committee Meeting Minutes**

5:30 PM

Thompson's West End Park

Members Present:

Angel Croll, Jeremy Oswald, Jen Maziasz, Erika Lang

Municipal Personnel Present:

Tony Janisch, Asst. City Administrator

Absent:

Susan Hall

**Call to Order/Roll Call**

Acting Chair Oswald called the meeting to order at 5:38 PM; three (3) of five (5) members are present; quorum is recognized. Lang arriving after roll call.

**Approval of Parks Committee Meeting Minutes**

Motion was made to approve Park Committee minutes of June 20, 2023 by Oswald with one correction, second by Croll; Minutes approved unanimously.

**Updates from Public Works Department & City Administration**

No updates were provided by Public Works. Janisch provided the following updates:

- A kick-off meeting for the bike park concept is scheduled for Thursday, July 20 at 11am with the City, WOW and IMBA. Committee members are invited to attend.
- Campgrounds: More individuals have been asked to vacate sites due to lack of payment. Maziasz offered information regarding USFS dispersed camping. Shower coin collector was broken into at Memorial Park.
- Potential FEMA funding for engineering to address the Memorial Park coastal erosion issue from pavilion to NE property line. This grant would require the City to match 10% of the costs. Seeking Council's acceptance of the award at the August meeting.
- Cooper engineering completed. Saw soil boring for bridge placement near yurts.
- A survey of seasonal campers was conducted asking about the need & usage of cable & WiFi services in the campgrounds. The City is considering options to upgrade cable service or to end it.
- The show Discover Wisconsin will be filming along the Walking Trail on July 27.
- A group reservation (Heartland LTV's) will occur at Memorial Park, scheduled Sept. 18-21. Most sites have been reserved and payment has been received.

**Update on Implementation of the Walking Trail Land Management Plan & WI Coastal Management Grant**

- West End trailhead reroute & installation of signage was completed.

### **Presentation, Discussion & Action of Invasive Species Control along Walking Trail - Nile Merton, Bay Area Environmental Consulting, presenter**

- Money wart demonstration area: money wart was eliminated but opened the area to other invasive plant species.
- Culvert at the first open area past the native plant garden is filled with invasive plants that are not holding the soil. Nile recommends the culvert be replaced with a larger size and native speed, planted adjacent to culvert.
- The old Washburn Lumbering Day sign is in disrepair and should be replaced or removed.
- Create a plan for ash tree die off (due to Emerald Ash Borer) along the drainage east of sixth Avenue. Suggested replacement trees.
- Buckthorn and honeysuckle treatment has a good outcome and should continue to be maintained.
- Discussion occurred about the open field at Fourth Ave. and possible uses.

### **Discussion & Action on Updating the Lakeshore Parkway and Walking Trail Land Management Plan**

Overall thoughts regarding next Walking Trail Management Plan revolved around the idea of “desired future conditions”. Further discussion needed for timeline, open field concepts, and including public involvement.

### **Tour West End Park Campground & Lakeshore Parkway**

Tour occurred only of Lakeshore Parkway, due to lack of time. Potential placement of bridge to yurt area was discussed.

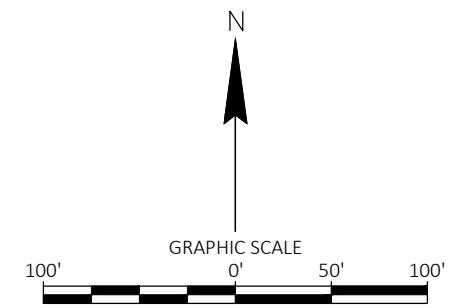
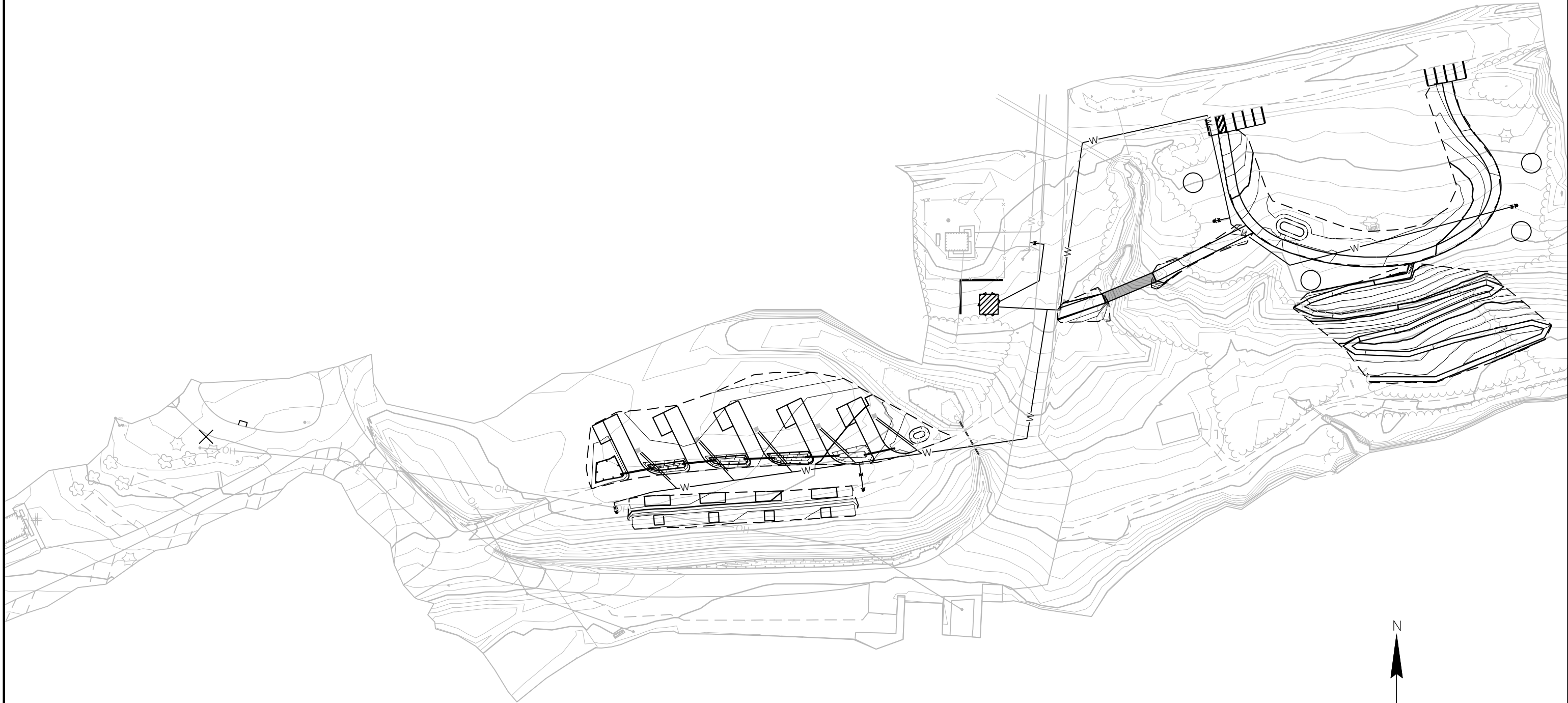
### **Adjournment**

Meeting was adjourned at 6:59 PM

Angel Croll  
Secretary, Parks Committee

G:\2023\proj\23290077\3d\Sheets\Sheets\_GradingAndErosionControl.dwg

PLOT DATE: Aug 03, 2023 - 04:32pm



NO.	BY	DATE	REVISIONS

CEC PROJECT NO.  
23290077  
DRAWN BY NJG  
ISSUE DATE 08/03/2023

PROJECT MANAGER NICOLE HODKIEWICZ, P.E.  
CHECKED BY NKH  
APPROVED BY NKH

**COOPER ENGINEERING**  
2600 COLLEGE DRIVE, P.O. BOX 230  
RICE LAKE, WISCONSIN 54868-0230  
TELEPHONE (715) 234-7008  
FAX (715) 234-1025

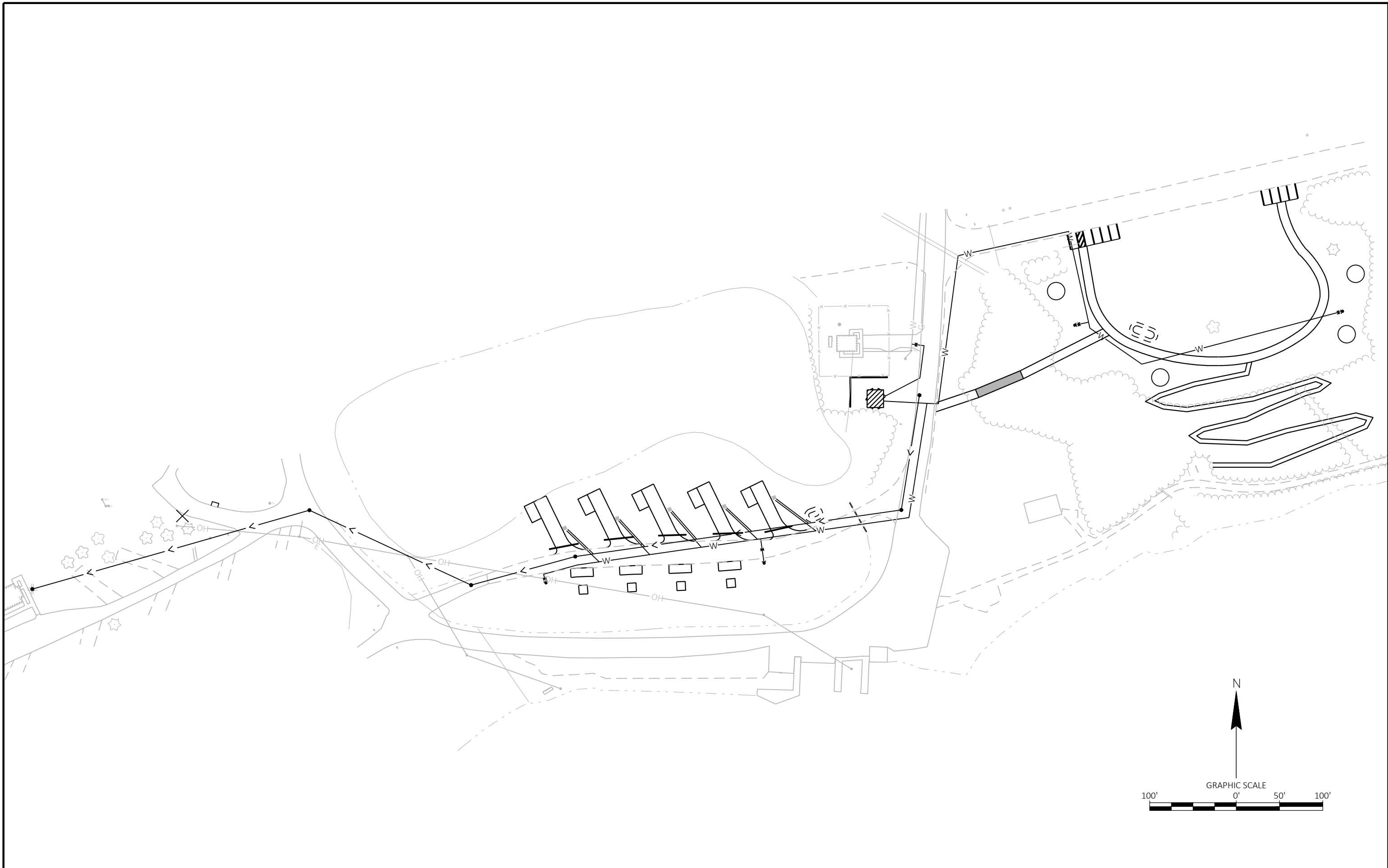
CITY OF WASHBURN  
CITY OF WASHBURN, BAYFIELD COUNTY

WEST END PARK CAMPGROUND  
EROSION CONTROL PLAN

08/03/2023 DRAFT  
SHEET 11

G:\2023\proj\23290077\3d\Sheets\SHEETS\_ProposedSitePlan.dwg

PLOT DATE: Aug 03, 2023 - 04:32pm



NO.	BY	DATE	REVISIONS

CEC PROJECT NO.  
23290077  
DRAWN BY NJG  
ISSUE DATE 08/03/2023

PROJECT MANAGER NICOLE HODKIEWICZ, P.E.  
CHECKED BY NKH  
APPROVED BY NKH



2600 COLLEGE DRIVE, P.O. BOX 230  
RICE LAKE, WISCONSIN 54868-0230  
TELEPHONE (715) 234-7008  
FAX (715) 234-1025

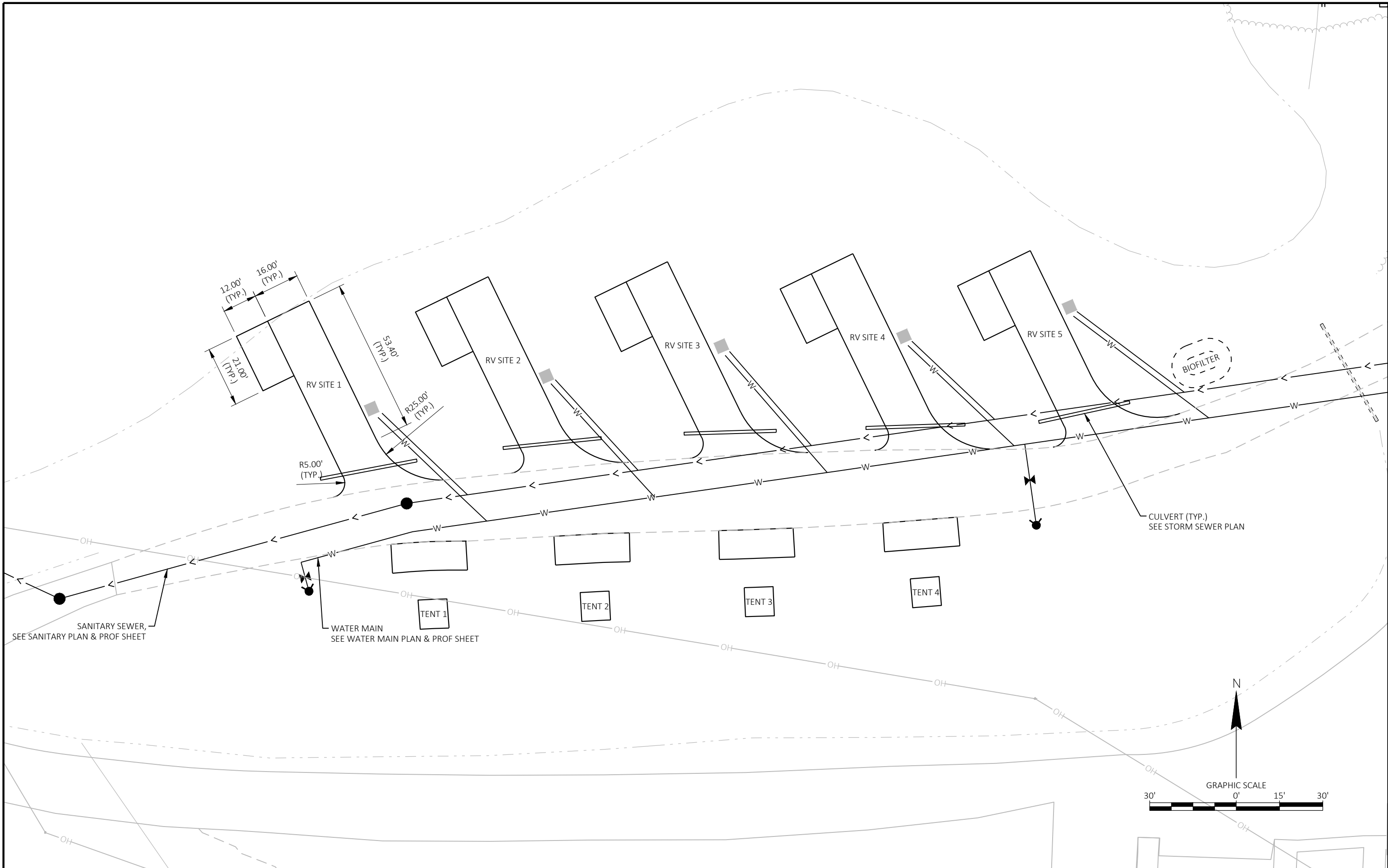
CITY OF WASHBURN  
CITY OF WASHBURN, BAYFIELD COUNTY

WEST END PARK CAMPGROUND  
PROPOSED SITE OVERVIEW

08/03/2023 DRAFT  
SHEET 12

G:\2023\proj\2329007\3d\Sheets\SHEETS\_ProposedSitePlan.dwg

PLOT DATE: Aug 03, 2023 - 04:32pm



NO.	BY	DATE	REVISIONS

CEC PROJECT NO. 23290077	PROJECT MANAGER NICOLE HODKIEWICZ, P.E.
DRAWN BY NJG	CHECKED BY NKH
ISSUE DATE 08/03/2023	APPROVED BY NKH

**COOPER ENGINEERING**  
 2600 COLLEGE DRIVE, P.O. BOX 230  
 RICE LAKE, WISCONSIN 54868-0230  
 TELEPHONE (715) 234-7008  
 FAX (715) 234-1025

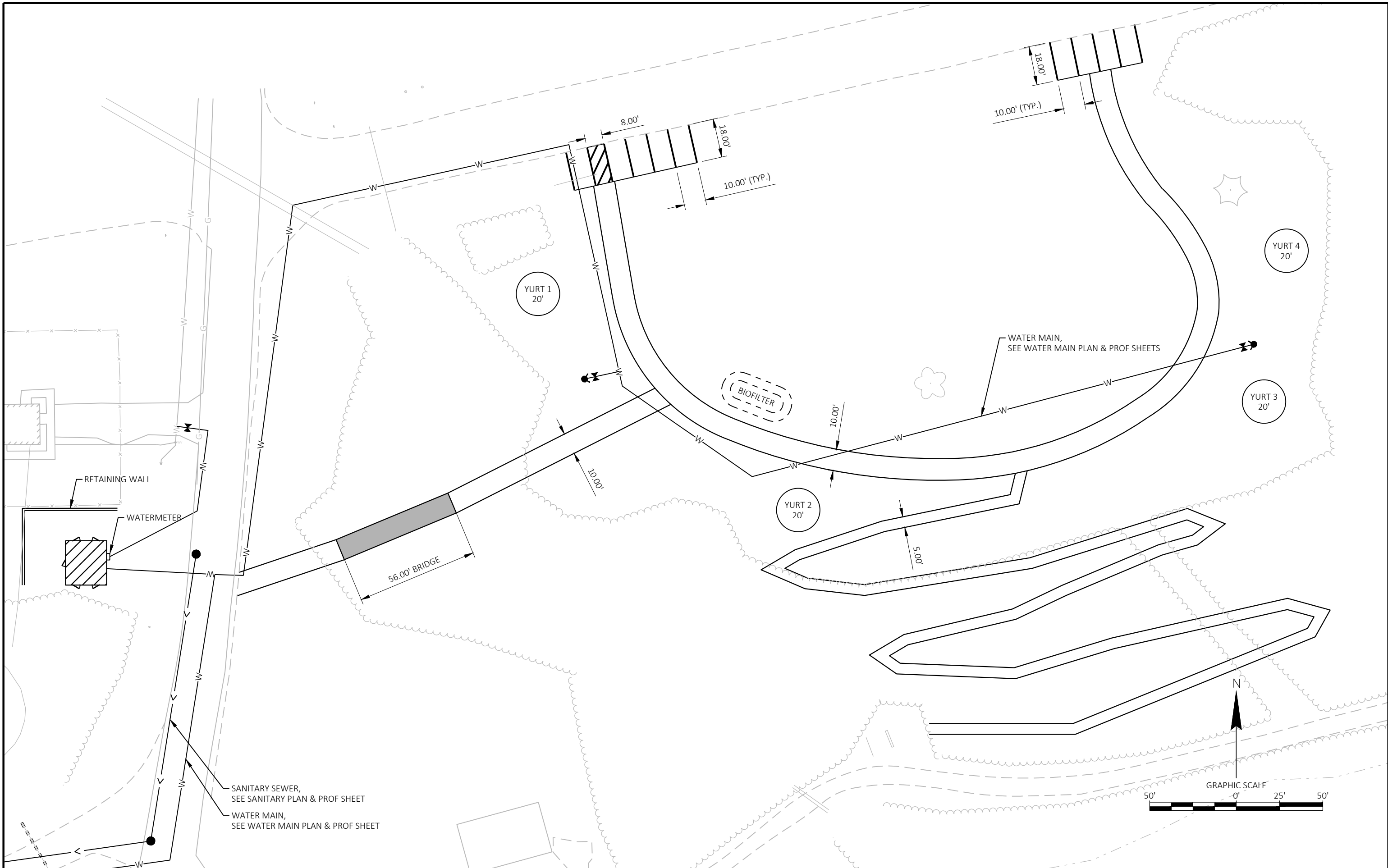
CITY OF WASHBURN  
 CITY OF WASHBURN, BAYFIELD COUNTY

WEST END PARK CAMPGROUND  
 PROPOSED RV AREA PLAN

08/03/2023 DRAFT  
 SHEET 13

G:\2023\proj\23290077\Gd\Sheets\SHEETS\_ProposedSitePlan.dwg

PLOT DATE: Aug 03, 2023 - 04:32pm



NO.	BY	DATE	REVISIONS

CEC PROJECT NO. 23290077	PROJECT MANAGER NICOLE HODKIEWICZ, P.E.
DRAWN BY NJG	CHECKED BY NKH
ISSUE DATE 08/03/2023	APPROVED BY NKH

**COOPER ENGINEERING**  
 2600 COLLEGE DRIVE, P.O. BOX 230  
 RICE LAKE, WISCONSIN 54868-0230  
 TELEPHONE (715) 234-7008  
 FAX (715) 234-1025

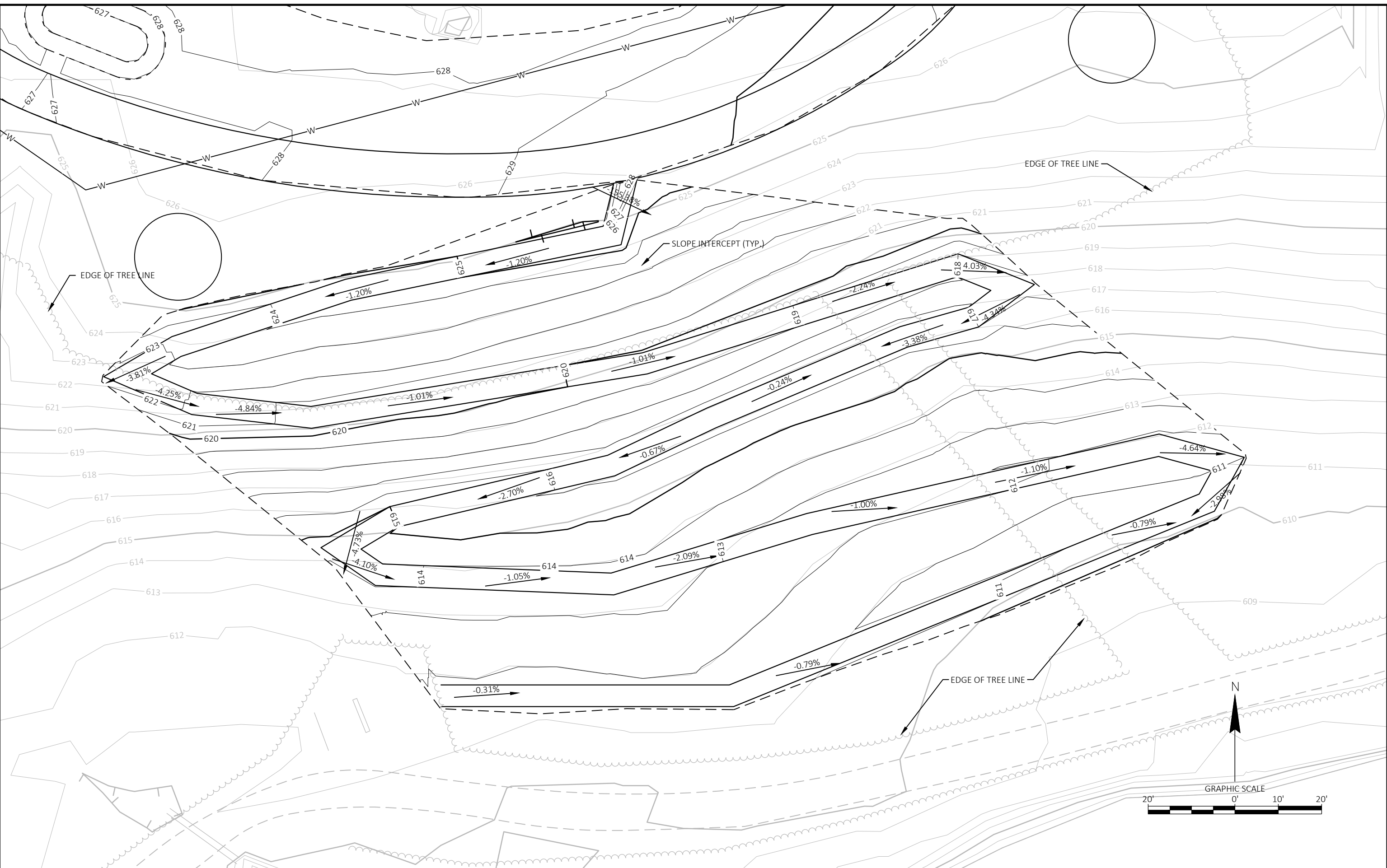
CITY OF WASHBURN  
 CITY OF WASHBURN, BAYFIELD COUNTY

WEST END PARK CAMPGROUND  
 PROPOSED YURT AREA PLAN

08/03/2023 DRAFT  
 SHEET 14

G:\2023\proj\2329007\CAD\Sheets\Sheets\_Grading\GradingControl.dwg

PLOT DATE: Aug 03, 2023 - 04:33pm



NO.	BY	DATE	REVISIONS

CEC PROJECT NO.  
23290077

DRAWN BY NJG  
ISSUE DATE 08/03/2023

PROJECT MANAGER NICOLE HODKIEWICZ, P.E.  
CHECKED BY NKH  
APPROVED BY NKH

**COOPER ENGINEERING**

2600 COLLEGE DRIVE, P.O. BOX 230  
RICE LAKE, WISCONSIN 54868-0230  
TELEPHONE (715) 234-7008  
FAX (715) 234-1025

CITY OF WASHBURN  
CITY OF WASHBURN, BAYFIELD COUNTY

WEST END PARK CAMPGROUND  
YURT SOUTH GRADING PLAN

08/03/2023 DRAFT  
SHEET 18